

Why Braunvieh?

1. The most underestimated breed of cattle in South Africa.
2. The cow most capable of utilizing extensive grazing.
3. The best adapted breed, having a dark pigmented palate.
4. Economically producing the best crossbred calf.
5. Producing the best feeder calf.
6. The best utilizer of roughage.
7. The most manageable labour-saving breed.
8. Having cuts with the most sought after distribution of fat.
9. Having the lowest respiratory count after 3 km.
10. Having the highest red blood corpuscles to survive in climatic circumstances.
11. Having a pigmented sunresisting coat.
12. The Braunvieh is not subject to cancer of the eye.
13. Having black hooves for wet feedlot circumstances and Milly pastures.
14. Being the tamest breed of cattle.
15. Spread over 60 countries. Therefore the ideal dual purpose breed.



PERFORMANCE OF BRAUNVIEH BREDS PARTICIPATING IN THE CATTLE IMPROVEMENT SCHEME

PRESTASIESKEMA VAN BRAUNVIEHREKERSDEUR WAT AAN DIE VERLEENDEVERBETERINGSKEMA DEELNEEM

BOE	YEAR - JAAR						
	1998	1999	2000	2001	2002	2003	2004
Birth weight - Geboortegewig	40	37	40	39	37	38	38
200 day weight - 200 dae gewig	220	228	246	240	234	237	239
Cow weight at birth of calf - Koppengewig by geboorte van kalf	488	467	467	503	522	524	503
Ratio Birth weight/cow weight % - Verhouding geboortegewig/koppengewig %	8,1	8,2	8,2	7,8	6,8	7,1	8,0
Cow weight at wean of calf - Koppengewig by wean van kalf	486	462	509	549	56	52	50
Ratio 200 day weight/cow weight % - Verhouding 200 dae gewig/koppengewig %	41,2	33,8	41,4	40,1	44,2	44,6	44,2
Age at first calving - Ouderskap eerste kalving	32	31	31	31	31	31	31
Incubating period - Inkubasietydperk	44	44,7	44,1	44,7	43,2	42,7	42,1
365 day weight - heifer (kg) - 365 dae gewig - stier (kg)	282	272	272	288	294	30	28
540 day weight - heifer (kg) - 540 dae gewig - stier (kg)	349	348	334	344	340	34	32,7

* No weights at birth available for 2002, average was used

COMPARISON OF DIFFERENT EUROPEAN BREEDS

VERGELYKING VAN VERSKILLENDE EUROPESE RASSE MET BRAUNVIEH

	YEAR 2001 - JAAR 2001			
	1	2	3	BOE
Birth weight - Geboortegewig	42	38	38	37
200 day weight - 200 dae gewig	240	224	222	235
Cow weight at birth of calf (kg) - Koppengewig by geboorte van kalf	408	510	524	524
Ratio Birth weight/cow weight % - Verhouding Geboortegewig/koppengewig %	7,0	6,2	7,3	7,1
Cow weight at wean of calf (kg) - Koppengewig by wean van kalf	422	54	524	524
Ratio 200 day weight/cow weight % - Verhouding 200 dae gewig/koppengewig %	37,4	40,2	42,3	42,3
Age at first calving (month) - Ouderskap eerste kalving	35	32	32	32
Incubating period (days) - Inkubasietydperk	42,2	42,5	40	44
365 day weight - heifer (kg) - 365 dae gewig - stier (kg)	294	28	284	227
540 day weight - heifer (kg) - 540 dae gewig - stier (kg)	338	322	327	227

CENTRALISED GROWTH TEST (FARM D) RESULTS

SENTRALISEERDE GROEITEST (FARM D) RESULTATE VAN BRAUNVIEH

	YEAR - JAAR						
	1998	1999	2000	2001	2002	2003	2004
Bulls (n) - Aardse helle	3	12	1	18	32	42	32
Age (month) - Ouderskap	34	32	32	32	32	32	32
Initial mass (kg) - Inisiale massa (kg)	487	470	520	487	454	486	529
Average daily gain ADG (kg) - Gemiddelde daaglikse gewigstoename (kg)	0,78	0,88	0,97	0,77	0,99	0,89	0,68
Final conversion rate - EOL - Jaar gewig	7,0	6,27	6,75	6,24	6,27	6,32	6,8
withholding MOY							
Standard circumference (mm) - Standaardomtrek (mm)	312	314	329	344	352	344	341
Wither height (mm) - Skouerhoogte (mm)	1234	1222	1272	1238	1272	1242	1225
Body length (mm) - Liggaamslengte (mm)	1284	1302	1342	135	1318	1311	1311
MR - inches (mm) - v. l. l. l.	8	8	8	8	8	8	8
Body Length - Height - Verhouding (Length/Height)	1,2	1,07	1,01	1,07	1,07	1,08	1,07

This is the breed to lead the beef industry in this collection. Braunvieh not it all together! Maximal, Mixing, Marketing and Performance.

Boost Your Bottom Line With Braunvieh!

Braunvieh

SOUTH AFRICA'S MOST WANTED CATTLE



What is a Braunvieh?

Braunvieh is not a crossbreed or a composite but, instead, may be one of the oldest pure beef breeds in the world. Braunvieh was originally developed in the Swiss Alps, but will adapt and will perform in basically any environment. Braunvieh can be found in over 60 countries from the Tropics to the Arctic Circle. Their genetically fringed hooves - a white band around the hooves, makes Braunvieh cattle very recognizable. Braunvieh are typically brown in color if a fallow.



SA Braunvieh
Postbus 7047
BLOEMFONTEIN
7100
Tel/Fax: 081 470 4702

SA Braunvieh
PO Box 7044
BLOEMFONTEIN
7100

Tel/Fax: 081 470 4702

Waarom Braunvieh

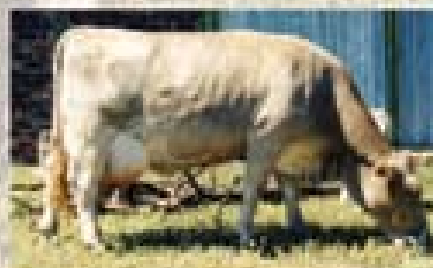
1. Die mees onverskatter bees in SA.
2. Die mees ekonomiese melkkoel.
3. Die mees aangepaste bees met sy donker gepigmenteerde verhouding.
4. Die mees ekonomiese kruiskalf lewer.
5. Die mees ekonomiese voerkraal kalf lewer.
6. Die mees ekonomiese verbeterer is van rivoer.
7. Die mees arbeidsbesparende hamerlingsbees is.
8. Die mees goeie verspreidingsnitte lewer.
9. Die laagste asemhalingsreël per minuut het na 3 km se stap.
10. Die hoogste rooibloedstelling het om in alle wisselende klimaatstoestande te oorleef.
11. 'n Songepigmenteerde haarkleed het.
12. Oogkanter is nie eie aan die Braunvieh nie.
13. Swart klose het nie net voerkraalstoestande en rantveld.
14. Die makste bees is.
15. Word in 60 lande aangetref. Daarom die ideale dubbeldoel-bees.



Crossbreeding



Braunvieh and Braunschweig Beef Builder cattle have, in many years, been recognized for their outstanding feedlot performance and superior carcass characteristics producing carcasses with a high quality grade and low yield grade. This recognition continues today. Of all the Continental breeds, Braunvieh is the only one that has marbling ability to go along with its muscle.



AT MEATQUALITY TESTS DONE AT IRENE THE FOLLOWING DATA EMERGED:

MEAT QUALITY CHARACTERISTICS OF THREE GENDER CONDITIONS OF BRAUNVIEH AS WELL AS COMMERCIAL RESULTS OF IAPT:

PARAMETER	BRAUNVIEH			Commercial Results • Commercial Results
	Bull Bull	On On	Grower/Steers/On • Culling/Steers/On	
PHYSICAL MEAS. • FOREM MEETING				
Carcass retention	74.84	80.79	86.27	77.80
TEST PANEL • PROCEPANIEL				
Area	4.27	4.8	5.07	5.95
Scoreline				
• Scapular	4.80	5.20	5.64	5.40
Trunkline				
• Sagittal	5.18	5.88	5.07	5.60
Accuracy				
• Accuracy	5.86	5.87	5.88	5.80

CARCASS CHARACTERISTICS OF THREE GENDER CONDITIONS: BRAUNVIEH, BRAUNVIEH BREED AVERAGE, A DUAL PURPOSE BREED AND A MEAT BREED.

	BRAUNVIEH BREED AVERAGE • BRAUNVIEH	DUAL PURPOSE BREED • DUALPURPOSE	MEAT BREED • MEATBREED
Slaughter mass			
• Slaughter	479.00	445.00	383.00
Carcass mass			
• Carcass mass	280.00	252.00	208.00
Beef %			
• Beef %	58.40	56.60	54.80
Meat %			
• Meat %	67.70	62.80	66.20
Total fat %			
• Total fat %	14.20	20.40	15.90
Bone % + Skin %			
• Bone % + Skin %	6.70	8.00	8.00
Plasma Bone			
• Plasma Bone	4.45	7.89	7.71
Meat Bone			
• Meat Bone	3.25	3.01	4.37
Hind quarter %			
• Hind quarter %	49.99	49.80	50.80
Cross section %			
• Cross section %	61.30	61.70	61.80
Eye muscle area		Not available	Not available
• Eye muscle area	77.70	• No available	• No available
Subcutaneous fat %			
• Subcutaneous fat %	84.70	82.80	82.00

A Combination

Why make Braunvieh such a strong choice in commercial programs? They have a proven ability to offer every condition without the "weakness". There are certainly cattle that will grade as well, others that may produce more milk or some that will be lean. However, for the customer who is looking for a functional breed to use in a crossbreeding program that is able to combine the best of their traits along with proven fertility results it will be quite important economic wise to the best functional performance and much more, Braunvieh is the breed of choice. Braunvieh puts it all together.